

简易浮动接头

FK Series

●适用缸径 : $\phi 6 \cdot \phi 100$



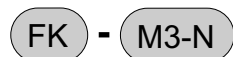
规格

型号		允许负荷 (N)	允许偏心量 (mm)	轴向的松动量 (mm)
外螺纹	内螺纹			
FK-M3-N	FK-M3	63	± 0.3	0.1 ~ 0.3
FK-M4-N	FK-M4	110		
FK-M5-N	FK-M5	179		
FK-M6-N	FK-M6	253		
FK-M8-N	FK-M8 × 1.0	462		
—	FK-M8 × 1.25	462		
FK-M10-N	FK-M10	734		
—	FK-M12	1069		
—	FK-M14	1466		
FK-M16-N	FK-M16	2003		
—	FK-M18	2448		
FK-M20-N	—	3130		
—	FK-M22	3896		
—	FK-M26	6219		

注1: 允许负荷表示静负荷。

型号表示方法

简易浮动接头



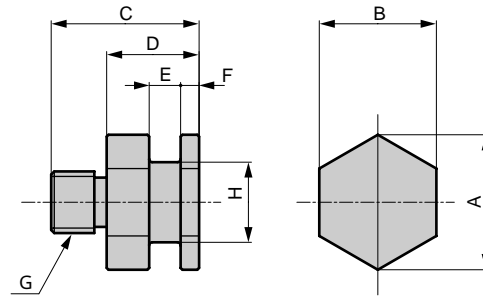
机种型号

① 螺纹尺寸

符号	内容	
① 螺纹尺寸		
M3-N	M3 × 0.5	外 螺 纹 型
M4-N	M4 × 0.7	
M5-N	M5 × 0.8	
M6-N	M6 × 1.0	
M8-N	M8 × 1.25	
M10-N	M10 × 1.5	
M16-N	M16 × 2.0	
M20-N	M20 × 2.5	
M3	M3 × 0.5	内 螺 纹 型
M4	M4 × 0.7	
M5	M5 × 0.8	
M6	M6 × 1.0	
M8 × 1.0	M8 × 1.0	
M8 × 1.25	M8 × 1.25	
M10	M10 × 1.25	
M12	M12 × 1.5	
M14	M14 × 1.5	
M16	M16 × 1.5	
M18	M18 × 1.5	
M22	M22 × 1.5	
M26	M26 × 1.5	

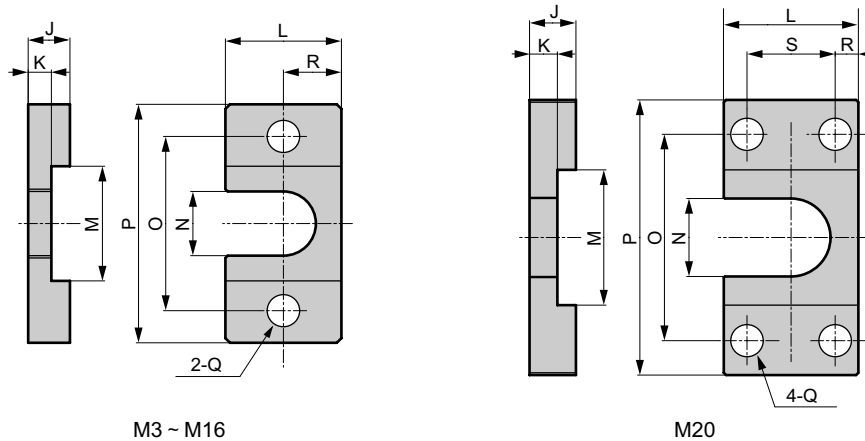


部件(1)



材 质：钢
表面处理：镀镍

部件(2)



M3 ~ M16

M20

部件(1)

型号	适用气缸	A	B	C	D	E	F	G	H
FK-M3-N	SSD-12	11.6	10	15	10	3.1 ^{+0.1} ₀	2	M3 × 0.5	6
FK-M4-N	SSD-16	11.6	10	15.5	10	3.1 ^{+0.1} ₀	2	M4 × 0.7	6
FK-M5-N	SSD-20,FCD-25	13.9	12	16.5	10	3.1 ^{+0.1} ₀	2	M5 × 0.8	8
FK-M6-N	SSD-25,FCD-32	13.9	12	19	10	3.1 ^{+0.1} ₀	2	M6 × 1.0	8
FK-M8-N	SSD-32,40,FCD-40,50	21.9	19	23	15	5.1 ^{+0.1} ₀	3	M8 × 1.25	13
FK-M10-N	SSD-50,63,FCD-63	21.9	19	24	15	5.1 ^{+0.1} ₀	3	M10 × 1.5	13
FK-M16-N	SSD-80	37	32	31	20	7.1 ^{+0.1} ₀	4	M16 × 2.0	23
FK-M20-N	SSD-100	53.1	46	43	28	12.1 ^{+0.1} ₀	7	M20 × 2.5	32

部件(2)

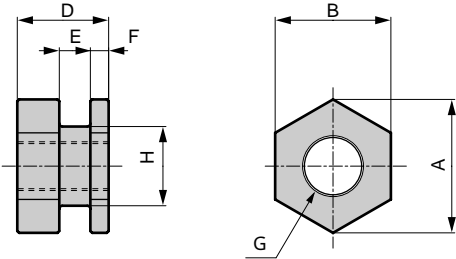
型号	适用气缸	J	K	L	M	N	O	P	Q	R	S
FK-M3-N	SSD-12	6	3 ⁰ _{-0.1}	16	14	7	24	34	4.5	8	—
FK-M4-N	SSD-16	6	3 ⁰ _{-0.1}	16	14	7	24	34	4.5	8	—
FK-M5-N	SSD-20,FCD-25	6	3 ⁰ _{-0.1}	19	16	9	26	36	4.5	9.5	—
FK-M6-N	SSD-25,FCD-32	6	3 ⁰ _{-0.1}	19	16	9	26	36	4.5	9.5	—
FK-M8-N	SSD-32,40,FCD-40,50	9	5 ⁰ _{-0.1}	25	25	14	38	52	7	12.5	—
FK-M10-N	SSD-50,63,FCD-63	9	5 ⁰ _{-0.1}	25	25	14	38	52	7	12.5	—
FK-M16-N	SSD-80	12	7 ⁰ _{-0.1}	44	42	25	62	85	11	22	—
FK-M20-N	SSD-100	22	12 ⁰ _{-0.1}	65	59	34	90	120	14	13.5	38

RRC
GRC
RV3
NHS
HR
LN
FH100
HAP
BSA2
BHA·BHG
LHA
LHAG
HKP
HLA·HLB
HLAG·HLBG
HEP
HCP
HMF
HMFB
HFP
HLC
HGP
FH500
HBL
HDL
HMD
HJL
BHE
CKG
CK
CKA
CKS
CKF
CKJ
CKL2
CKL2
-HC
CKH2
CKLB2
NCK·SCK·FCK
FJ
FK
ABP
简关
易联
浮元
动件
接头

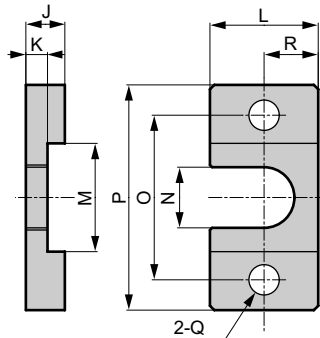


材 质：钢
表面处理：镀锌

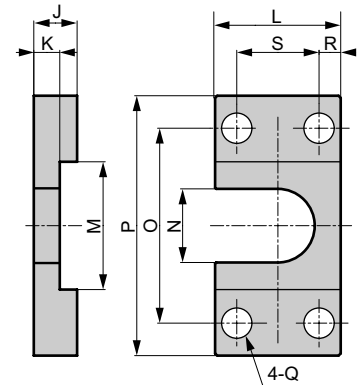
部件(1)



部件(2)



M3 ~ M18



M22 ~ M26

部件(1)

型号	适用气缸	A	B	D	E	F	G	H
FK-M3	SCPD2-6,CAT-6,SMD2-6	11.6	10	10	3.1 ^{+0.1} ₀	2	M3 × 0.5	6
FK-M4	SCPD2-10,CAT-10,SMD2-10	11.6	10	10	3.1 ^{+0.1} ₀	2	M4 × 0.7	6
FK-M5	SCPD2-16,CAT-15,SMD2-16 SSD-12-N	13.9	12	10	3.1 ^{+0.1} ₀	2	M5 × 0.8	8
FK-M6	SMD2-20,SSD-16-N	13.9	12	10	3.1 ^{+0.1} ₀	2	M6 × 1.0	8
FK-M8 × 1.0	CMK2-20,CMA2-20,JSK2-20,JSM2-20	21.9	19	15	5.1 ^{+0.1} ₀	3	M8 × 1.0	13
FK-M8 × 1.25	SMD2-25,SSD-20-N,SCM-20	21.9	19	15	5.1 ^{+0.1} ₀	3	M8 × 1.25	13
FK-M10	CMK2-25-32,CMA2-30,SMD2-32,SSD-25-N SCM-25-32,FCD-25-N,JSK2-25-32,JSM2-30	21.9	19	15	5.1 ^{+0.1} ₀	3	M10 × 1.25	13
FK-M12	CMK2-40,CMA2-40,JSK2-40,JSM2-40	27.7	24	15	5.1 ^{+0.1} ₀	3	M12 × 1.5	18
FK-M14	SCA2-40,SSD-32-40-N SCM-40,FCD-32-40-N,JSC3-40	27.7	24	15	5.1 ^{+0.1} ₀	3	M14 × 1.5	18
FK-M16	CAV2-50	37	32	20	7.1 ^{+0.1} ₀	4	M16 × 1.5	23
FK-M18	SCA2-50-63,SSD-50-63-N,SCM-50-63 FCD-50-63-N,JSC3-50-63	37	32	20	7.1 ^{+0.1} ₀	4	M18 × 1.5	23
FK-M22	SCA2-80,SSD-80-N,JSC3-80 SCM-80,CAV2-75-100	53.1	46	28	12.1 ^{+0.1} ₀	7	M22 × 1.5	32
FK-M26	SCA2-100,SSD-100-N,SCM-100,JSC3-100	53.1	46	28	12.1 ^{+0.1} ₀	7	M26 × 1.5	32

部件(2)

型号	适用气缸	J	K	L	M	N	O	P	Q	R	S
FK-M3	SCPD2-6,CAT-6,SMD2-6	6	3 ⁰ _{-0.1}	16	14	7	24	34	4.5	8	—
FK-M4	SCPD2-10,CAT-10,SMD2-10	6	3 ⁰ _{-0.1}	16	14	7	24	34	4.5	8	—
FK-M5	SCPD2-16,CAT-15,SMD2-16 SSD-12-N	6	3 ⁰ _{-0.1}	19	16	9	26	36	4.5	9.5	—
FK-M6	SMD2-20,SSD-16-N	6	3 ⁰ _{-0.1}	19	16	9	26	36	4.5	9.5	—
FK-M8 × 1.0	CMK2-20,CMA2-20,JSK2-20,JSM2-20	9	5 ⁰ _{-0.1}	25	25	14	38	52	7	12.5	—
FK-M8 × 1.25	SMD2-25,SSD-20-N,SCM-20	9	5 ⁰ _{-0.1}	25	25	14	38	52	7	12.5	—
FK-M10	CMK2-25-32,CMA2-30,SMD2-32,SSD-25-N SCM-25-32,FCD-25-N,JSK2-25-32,JSM2-30	9	5 ⁰ _{-0.1}	25	25	14	38	52	7	12.5	—
FK-M12	CMK2-40,CMA2-40	9	5 ⁰ _{-0.1}	32	32	19	50	70	9	16	—
FK-M14	SCA2-40,SSD-32-40-N SCM-40,FCD-32-40-N,JSC3-40	9	5 ⁰ _{-0.1}	32	32	19	50	70	9	16	—
FK-M16	CAV2-50	12	7 ⁰ _{-0.1}	44	42	25	62	85	11	22	—
FK-M18	SCA2-50-63,SSD-50-63-N,SCM-50-63 FCD-50-63-N,JSC3-50-63	12	7 ⁰ _{-0.1}	44	42	25	62	85	11	22	—
FK-M22	SCA2-80,SSD-80-N,JSC3-80 SCM-80,CAV2-75-100	22	12 ⁰ _{-0.1}	65	59	34	90	120	14	13.5	38
FK-M26	SCA2-100,SSD-100-N,SCM-100,JSC3-100	22	12 ⁰ _{-0.1}	65	59	34	90	120	14	13.5	38